

SHERIFF - 3020, 3110, 3150, 3189

MISSION

The mission of the Albany County Sheriff's Department is to ensure the public safety of Albany County residents as the conservator of the peace and enforcement officer of the courts. The mission of the Correctional Facility is to ensure the safety of Albany County residents by controlling and caring for arrested individuals remanded to the custody of the County Sheriff. The mission of the Enhanced 911 (Emergency Telephone) program is to implement and maintain an easy-to-use Countywide telephone system for all households and businesses. The E-911 system eliminates potential delays and confusion when summoning emergency assistance by providing seamless Countywide communication among police, fire, and emergency medical services. The mission of the STOP-DWI Program is to improve the quality of life of the residents of Albany County by reducing alcohol and drug-related traffic injuries and fatalities by targeting underage alcohol and drug use through enforcement, prosecution, public information and education, victim services, and rehabilitation support.

ABOUT OUR DEPARTMENT

The numerous units of the Sheriff's Department impartially enforce the law and provide public safety planning for Albany County:

The **Civil Unit** executes the service and enforcement of court processes by executing criminal and civil warrants and enforcing civil judgments.

The **Court Security and Transport Unit** provides security services to the local Unified Court System courts and transports adult prisoners to State correctional facilities and certain juvenile offenders to detention facilities. Court security personnel enforce the laws in the courtrooms, provide for the protection of judges, jurors, and all court participants, transport prisoners and handle all emergencies that arise during court proceedings. Security services and court attendants are reimbursed by the State Office of Court Administration.

The **Airport Substation** provides security services at the Albany International Airport.

The **Patrol Station** patrols highways and conducts investigations in areas of the County lacking other police service and maintains seasonal snowmobile and waterway patrol service. It also supports the Drug Abuse Resistance Education program in local schools.

The **Emergency Medical Services Unit** provides Advanced Life Support service in the southern and western portions of the County.

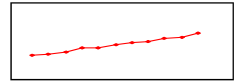
The **Critical Incident Management Unit** provides on-scene coordination involving natural and human-made disasters that involve multi-agency, multi-disciplinary responses.

The **Albany County Correctional Facility** is under the supervision of the Sheriff's Office which oversees recruitment of personnel, coordinates planning activities, and monitors internal controls.

The **Drug Interdiction Unit** identifies and apprehends drug offenders and deters illegal drug activity through cooperative investigations with other law enforcement agencies in Albany County.

The **Natural Disaster Preparedness and Emergency Management Services** provides planning and coordinating services to County agencies and local governments in the County to ensure continuity of local government in the event of a disaster.

APPROPRIATION HISTORY



1998:	\$30,905,815
1999:	\$31,765,330
2000:	\$35,353,202
2001:	\$41,133,239
2002:	\$42,132,335
2003:	\$46,918,611
2004:	\$49,262,623
2005:	\$51,042,569
2006:	\$55,949,215
2007:	\$56,739,091
2008:	\$62,519,670

CONTACT INFORMATION

Office of the Sheriff
County of Albany
Albany County Court House
Albany, New York 12207
Office: (518) 487-5400
Fax: (518) 487-5037
www.albanycountysheriff.com

CONTACT INFORMATION

Albany County
Correctional Facility
840 Albany Shaker Road
Albany, New York 12211
Office: (518) 869-2600
Fax: (518) 869-3923

SHERIFF - 3020, 3110, 3150, 3189

The **Office of the Fire Coordinator** administers County programs for fire training and mutual aid.

CORRECTIONAL FACILITY

The Albany County Correctional Facility operates under the direction of the County Sheriff to provide a secure environment for incarcerating inmates that prevents escape from custody and the introduction of contraband into the facility. The programs established at the facility fulfill the basic living needs of inmates such as meals, clothing, laundry, medical care, and daily exercise. In order to maintain good order at the facility, inmates are properly housed according to gender, criminal and psychological history, special medical needs, and personal behavior while in custody.

The Correctional Facility works in conjunction with numerous criminal justice and social service agencies to successfully fulfill its mission and meet New York State guidelines. The facility provides a legal library service, chaplain service, visitation programs, commissary privileges, and maintains building and fire safety. Moreover, the facility's staff receive training to maintain all necessary skills and certifications. The 35-member Corrections Emergency Response Team is specially trained to gain control of emergency situations within the facility.

The facility's Medical Unit treats inmates' basic medical needs; the food service program provides nutritious meals; and the Inmate Services Unit evaluates inmates' personal, criminal, and psychological histories to determine appropriate placement in programs. Inmates are also helped to overcome drug and/or alcohol dependencies and are offered AIDS/HIV education.

To encourage positive change in behavior and lifestyle, the facility offers several programs to raise inmate education and skill levels so that they can secure and maintain employment upon re-entering the community. The Work Incentive Program allows inmates to learn job skills within the Correctional Facility. The Work Alternative Program gives them valuable work experience in the community, while providing services to local governments and non-profit organizations. The Correctional Facility also provides counseling programs to reduce instances of domestic violence.

Unused cell space is rented to other governments that have overcrowded facilities or inmates with special needs, which partially offsets the cost of the facility to the County (see graph on page 115).

The Albany County Correctional Facility is also involved in community education. The Just Another Inmate's Life Program seeks to educate young people and adults who have contact with the criminal justice system about the repercussions of crime in an attempt to dissuade them from criminal behavior.

EMERGENCY TELEPHONE/E-911

The Albany County E-911 Telephone Program maintains an emergency telephone system for all households and businesses in the County. This system eliminates delays and confusion when summoning emergency aid and provides seamless Countywide communication among fire, police, and emergency medical services (EMS). This program maintains a standardized addressing system and coordinates training for all County emergency telecommunications employees and dispatchers.

In addition, the E-911 program maintains Public Safety Answering Points (PSAP) for those communities that do not operate their own PSAP, thus doing away with duplicate facilities and personnel. This results in a more economical use of existing services. A PSAP committee is established to maintain minimum standards for physical plant, equipment, staffing, and training of personnel. These standards are utilized as a basis for establishing uniform agreements for operation of PSAP's and for effecting agreements for the Countywide purchase of equipment.

STOP-DWI

The Albany County STOP-DWI Program is responsible for administering various "Special Traffic Options Programs" in order

SHERIFF - 3020, 3110, 3150, 3189

to address the dangers of drunk and drugged driving, traffic safety, and underage drinking. The STOP-DWI Program is funded by fines collected by New York State from persons convicted of alcohol and substance abuse-related driving offenses.

OUTCOMES

- Albany County residents will be safe in their communities through the effective control of inmates at the Correctional Facility.
- Inmates will become productive, law-abiding citizens upon re-entering the community, through participation in programs to improve their education and skills, overcome dependency on alcohol and drugs and prevent violent behaviors.
- As a result of an effective and efficient E-911 communication network, the residents of Albany County and their property will be safeguarded when requesting emergency assistance of fire, police, and emergency medical services.
- As a result of the public information/education and enforcement efforts of the STOP-DWI Program, individuals who travel the roads of Albany County will be at reduced risk of alcohol or drug-related personal injury and fatal crashes.
- Qualifying nonviolent offenders will perform work, under supervision, that encourages them to engage in productive activities. Work programs save the use of tax dollars.

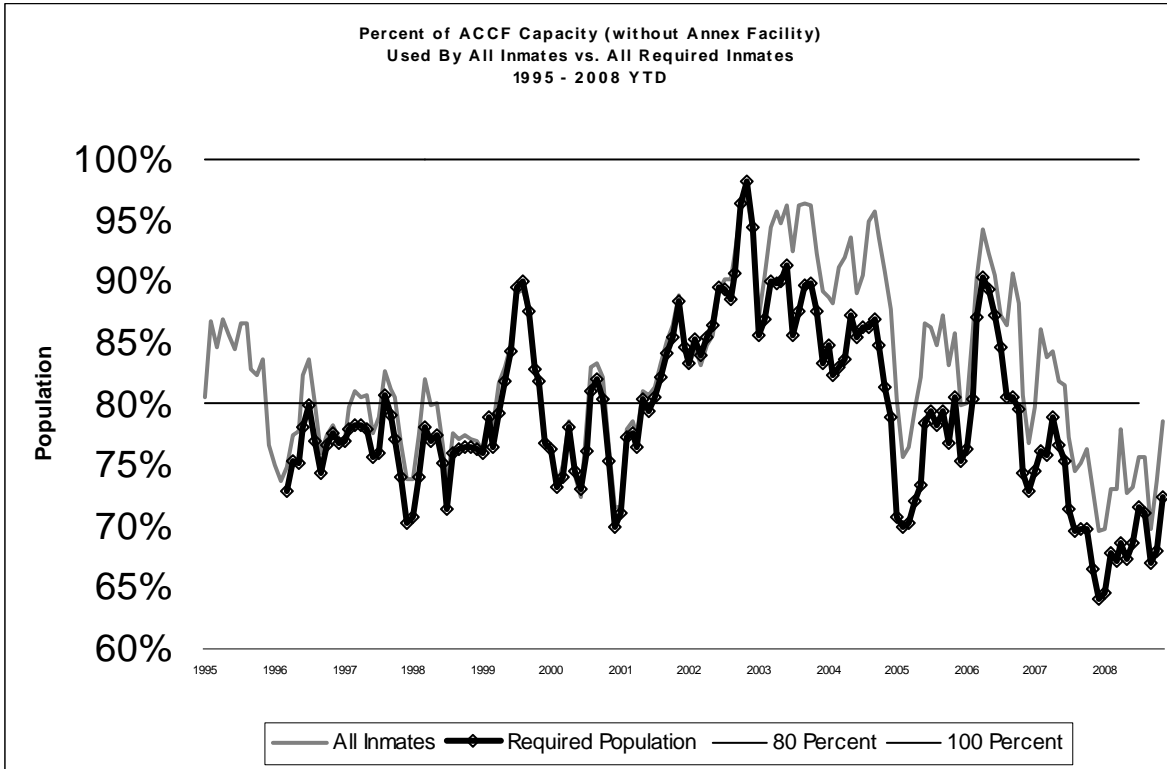
DEPARTMENT HIGHLIGHTS

- The 2009 Executive Budget proposes a year to year increase of \$171,801 in total appropriations for the Sheriff's Department across all accounts related primarily to significant increases in expenditures at the Correctional Facility and Sheriff (A3110) operations.
- The Executive Budget also proposes a reduction of \$675,986 in total revenues across all accounts for the department primarily related to a decrease in Boarder Revenue at the Correctional Facility related to construction of the Annex replacement facility and a decrease in reimbursement revenues from Albany Airport for Sheriff deputies expenses incurred for providing certain security services.
- The Executive Budget proposes a year to year reduction of \$ 1,071,541 in the Sheriff's Department's equipment and contractual expenses primarily related to the department's request for decreased funding in these areas of spending.
- The Executive Budget assumes implementation of a new 30 cent per month surcharge on all cellular phones within Albany County. Revenues for the surcharge contained in the E-911 Budget have been increased to \$1,350,000 in 2009 and represents a \$500,000 or 59% increase over 2008.
- The total inmate population at the Correctional Facility continues to experience a year to year decline. The most recent figures put September 2008 at an average daily inmate population of 672 as compared to 874 in September of 2006. Similarly, the population of inmates that the Correctional Facility is required to house by law has fallen from 747 to 655 over this same period.
- Resolution 50 of 2008 authorizes the Correctional Facility to replace an aging structure called the Annex. The new structure will be built to accommodate mental health inmates with special needs apart from the main population. The new housing arrangement for inmates with mental health needs requires a new information system. As the new Annex will segregate mental health services from physical health services for these individuals, a new electronic medical record system is needed in order to provide immediate access for both health and mental health professionals. Staff of the ACCF and the Department of Management and Budget have begun analysis and planning for such an electronic system and will continue this work during 2009. The Executive Budget includes additional funding to help implement this new medical record system in 2009.

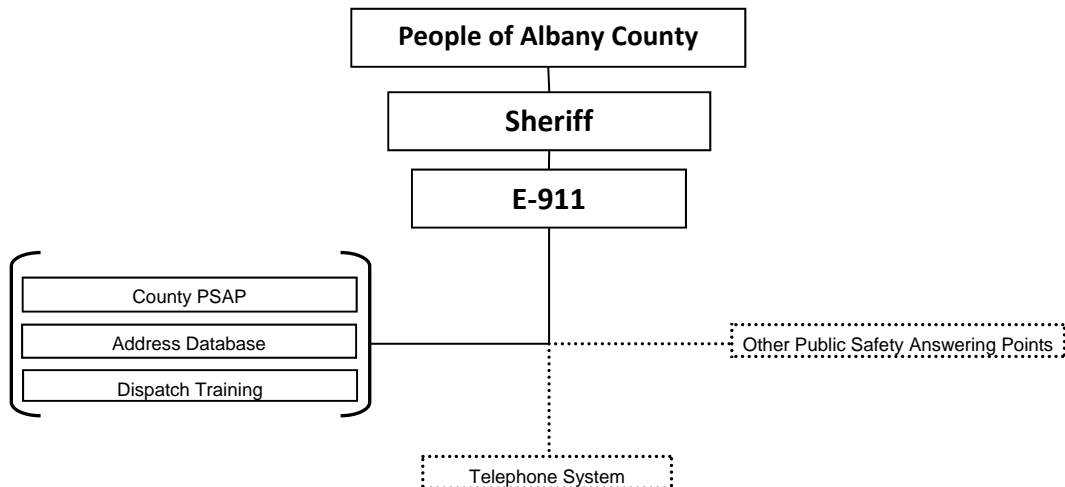
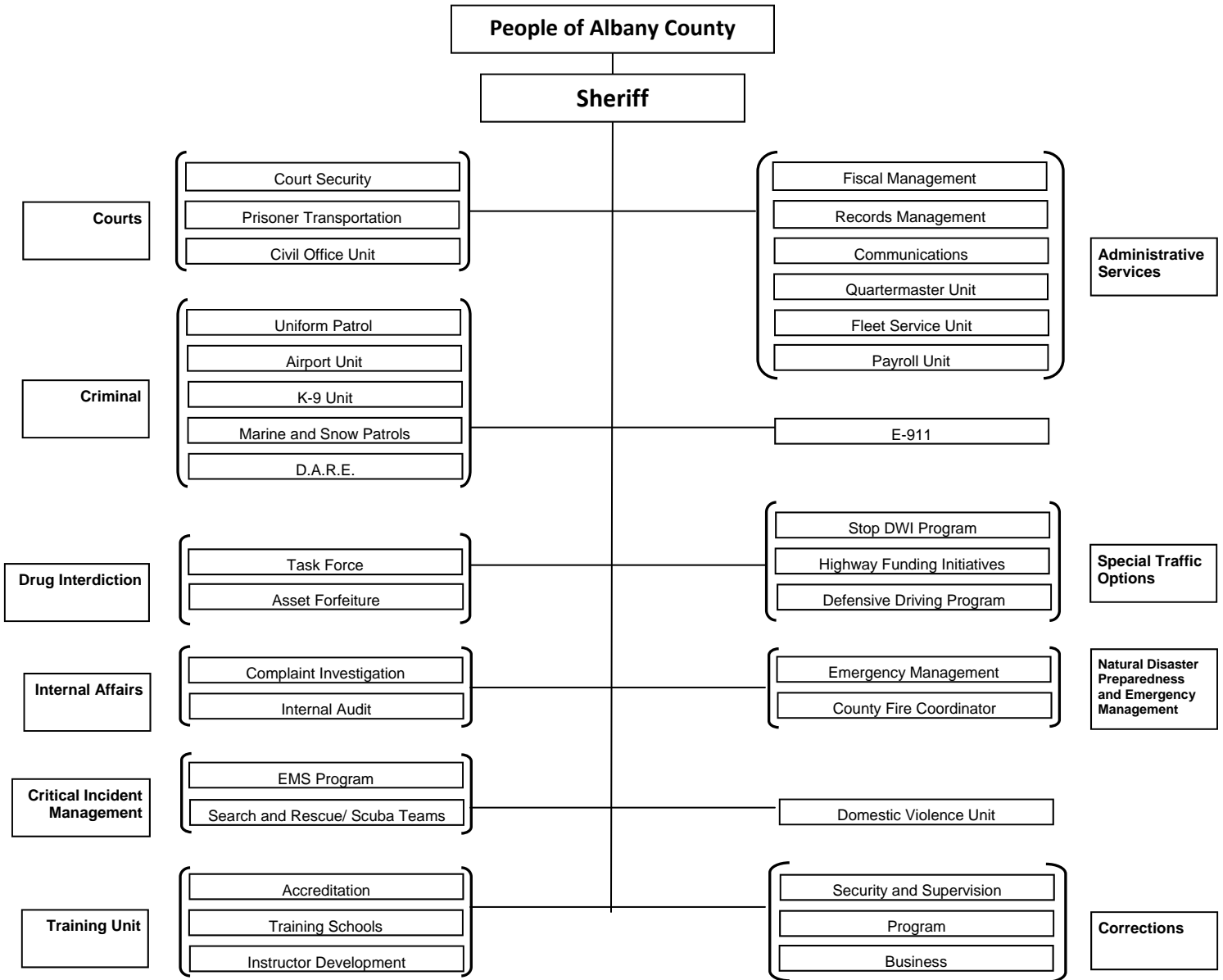
NEW POSITIONS

- The Executive Budget includes one paramedic and two new emergency medical technicians (EMTs) positions as well as one secretary I position for the Advance Life Support Program (ALS). This program has no County share and is fully funded by participating municipalities.

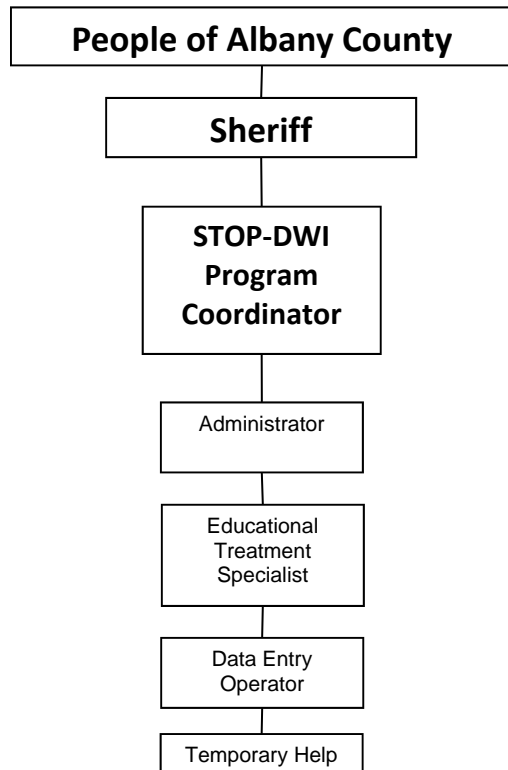
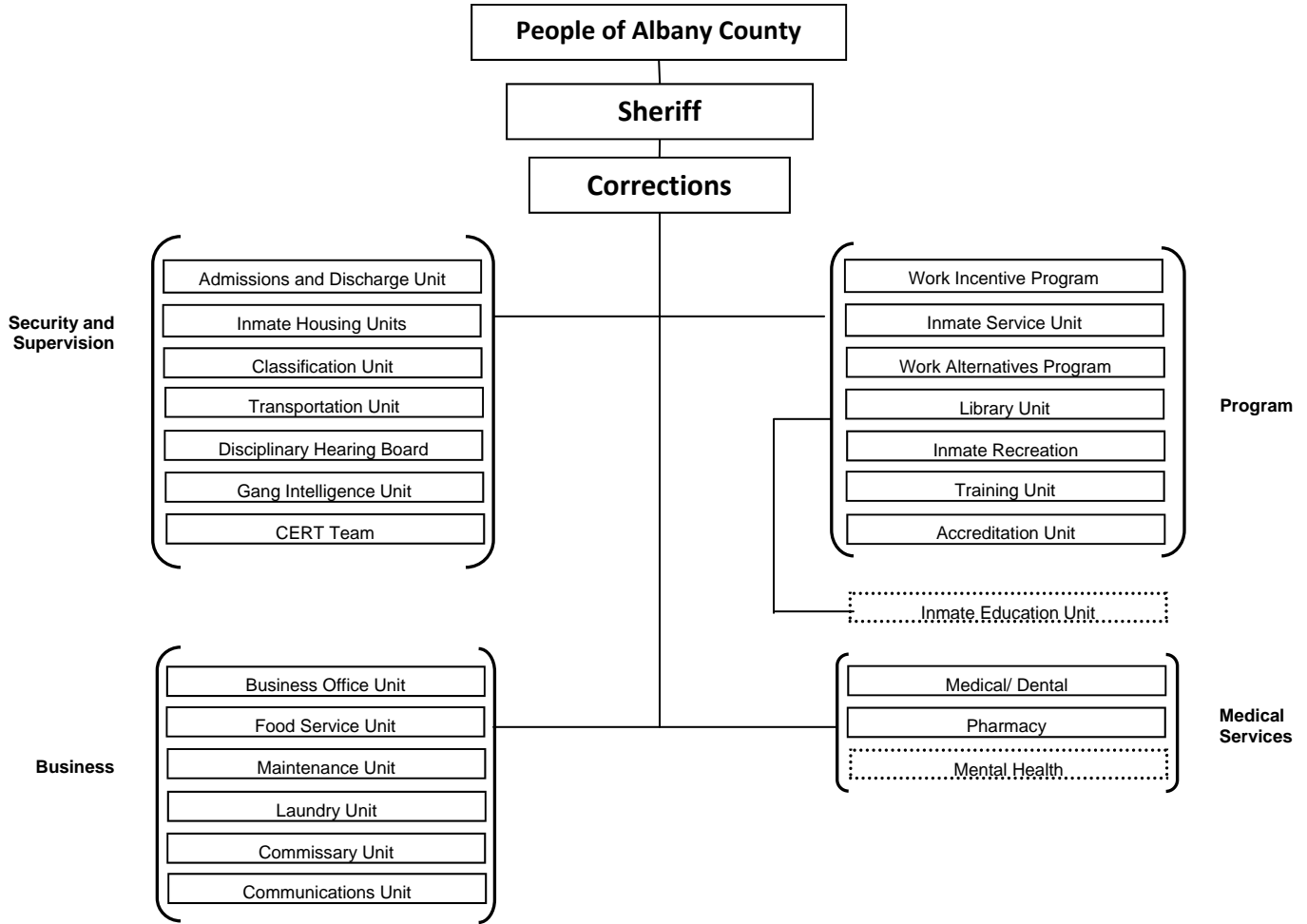
SHERIFF - 3020, 3110, 3150, 3189



SHERIFF - 3020, 3110, 3150, 3189



SHERIFF - 3020, 3110, 3150, 3189



SHERIFF - 3020, 3110, 3150, 3189

Account	Description	2007 Expended	2008 Adjusted	2009 Proposed	2008-09 Change	2008-09 Percent Change																																				
Appropriations																																										
Alb.Co.Traffic Safety Board-(3189)																																										
	Personnel Services	\$ 202,570	\$ 214,538	\$ 226,151	\$ 11,613	5.4%																																				
	Equipment	\$ 981	\$ 5,000	\$ 4,250	\$(750)	(15.0%)																																				
	Contractual Expenses	\$ 395,352	\$ 1,057,125	\$ 834,727	\$(222,398)	(21.0%)																																				
	Fringe Benefits	\$ 65,770	\$ 63,024	\$ 71,545	\$ 8,521	13.5%																																				
Alb.Co.Traffic Safety Board-(3189)		\$ 664,673	\$ 1,339,687	\$ 1,136,673	\$(203,014)	(15.2%)																																				
County Jail and Penitentiary-(3150)																																										
	Personnel Services	\$ 21,845,295	\$ 21,518,978	\$ 21,527,509	\$ 8,531	0.0%																																				
	Equipment	\$ 140,069	\$ 230,800	\$ 172,355	\$(58,445)	(25.3%)																																				
	Contractual Expenses	\$ 10,220,154	\$ 11,789,865	\$ 11,795,254	\$ 5,389	0.0%																																				
	Fringe Benefits	\$ 7,486,194	\$ 8,432,146	\$ 8,561,383	\$ 129,237	1.5%																																				
County Jail and Penitentiary-(3150)		\$ 39,691,712	\$ 41,971,788	\$ 42,056,501	\$ 84,713	0.2%																																				
Dispute Mediation-(1155)																																										
	Contractual Expenses	\$ 0	\$ 0	\$ 0	\$ 0	0.0%																																				
Dispute Mediation-(1155)		\$ 0	\$ 0	\$ 0	\$ 0	0.0%																																				
Emergency Telephone E-911-(3020)																																										
	Personnel Services	\$ 918,983	\$ 944,344	\$ 1,061,814	\$ 117,470	12.4%																																				
	Equipment	\$ 2,062,996	\$ 381,959	\$ 68,200	\$(313,759)	(82.1%)																																				
	Contractual Expenses	\$ 960,461	\$ 1,033,987	\$ 1,121,325	\$ 87,338	8.4%																																				
	Fringe Benefits	\$ 253,432	\$ 308,754	\$ 343,922	\$ 35,168	11.4%																																				
Emergency Telephone E-911-(3020)		\$ 4,195,871	\$ 2,669,044	\$ 2,595,261	\$(73,783)	(2.8%)																																				
Sheriff-(3110)																																										
	Personnel Services	\$ 9,318,932	\$ 9,988,591	\$ 10,310,998	\$ 322,407	3.2%																																				
	Equipment	\$ 713,074	\$ 801,064	\$ 324,875	\$(476,189)	(59.4%)																																				
	Contractual Expenses	\$ 2,094,042	\$ 2,013,561	\$ 2,075,379	\$ 61,818	3.1%																																				
	Fringe Benefits	\$ 3,486,761	\$ 3,735,935	\$ 4,191,784	\$ 455,849	12.2%																																				
Sheriff-(3110)		\$ 15,612,808	\$ 16,539,151	\$ 16,903,036	\$ 363,885	2.2%																																				
Total Appropriations		\$ 60,165,064	\$ 62,519,670	\$ 62,691,471	\$ 171,801	0.3%																																				
Revenue																																										
Alb.Co.Traffic Safety Board-(3189)																																										
		\$(802,181)	\$(1,096,179)	\$(1,136,673)	\$(40,494)	3.7%																																				
County Jail and Penitentiary-(3150)																																										
		\$(5,518,063)	\$(4,835,026)	\$(4,373,671)	\$ 461,355	(9.5%)																																				
Emergency Telephone E-911-(3020)																																										
		\$(757,341)	\$(1,375,304)	\$(1,365,100)	\$ 10,204	(0.7%)																																				
Sheriff-(3110)																																										
		\$(6,946,782)	\$(6,987,962)	\$(6,743,041)	\$ 244,921	(3.5%)																																				
Total Revenue		\$(14,024,367)	\$(14,294,471)	\$(13,618,485)	\$ 675,986	(4.7%)																																				
County Share		\$ 46,140,698	\$ 48,225,199	\$ 49,072,986	\$ 847,787	1.8%																																				
<table style="width: 100%; border-collapse: collapse;"> <thead> <tr> <th style="width: 40%;"></th> <th style="text-align: right;">2008 Adjusted</th> <th style="text-align: right;">2009 Requested</th> <th style="text-align: right;">2009 Proposed</th> <th style="text-align: right;">2008-09 Changes</th> <th style="text-align: right;">2008-09 Percent Change</th> </tr> </thead> <tbody> <tr> <td>COUNTY JAIL</td> <td style="text-align: right;">422</td> <td style="text-align: right;">422</td> <td style="text-align: right;">422</td> <td style="text-align: right;">0</td> <td style="text-align: right;">0.0%</td> </tr> <tr> <td>SHERIFF</td> <td style="text-align: right;">172</td> <td style="text-align: right;">175</td> <td style="text-align: right;">175</td> <td style="text-align: right;">3</td> <td style="text-align: right;">1.7%</td> </tr> <tr> <td>SHERIFF'S DEPT/ E-911</td> <td style="text-align: right;">21</td> <td style="text-align: right;">21</td> <td style="text-align: right;">21</td> <td style="text-align: right;">0</td> <td style="text-align: right;">0.0%</td> </tr> <tr> <td>TRAFFIC SAFETY BOARD</td> <td style="text-align: right;">4</td> <td style="text-align: right;">4</td> <td style="text-align: right;">4</td> <td style="text-align: right;">0</td> <td style="text-align: right;">0.0%</td> </tr> <tr> <td></td> <td style="text-align: right;">619</td> <td style="text-align: right;">622</td> <td style="text-align: right;">622</td> <td style="text-align: right;">3</td> <td style="text-align: right;">0.5%</td> </tr> </tbody> </table>								2008 Adjusted	2009 Requested	2009 Proposed	2008-09 Changes	2008-09 Percent Change	COUNTY JAIL	422	422	422	0	0.0%	SHERIFF	172	175	175	3	1.7%	SHERIFF'S DEPT/ E-911	21	21	21	0	0.0%	TRAFFIC SAFETY BOARD	4	4	4	0	0.0%		619	622	622	3	0.5%
	2008 Adjusted	2009 Requested	2009 Proposed	2008-09 Changes	2008-09 Percent Change																																					
COUNTY JAIL	422	422	422	0	0.0%																																					
SHERIFF	172	175	175	3	1.7%																																					
SHERIFF'S DEPT/ E-911	21	21	21	0	0.0%																																					
TRAFFIC SAFETY BOARD	4	4	4	0	0.0%																																					
	619	622	622	3	0.5%																																					