

# PUBLIC DEFENDER - 1170

## MISSION

The mission of the Public Defender's Office is to defend indigent persons charged with violations of law that could result in incarceration upon conviction and to represent indigent parties in Family Court matters.

## ABOUT OUR DEPARTMENT

The Office of the Albany County Public Defender provides free legal representation for indigent persons charged with violating New York State criminal laws and in 2006, the office's 37 attorneys represented more than 12,000 clients in Albany County Court, Albany Family Court and 17 other city, town and village courts within the County. Where appropriate, the office also works with judges, prosecutors and law enforcement officials to identify alternative programs to divert clients from incarceration.

The Public Defender is appointed by the County Executive and is subject to confirmation by the County Legislature. Assistant public defenders and staff are appointed by the Public Defender.

The Public Defender's office has traditionally been staffed by a combination of full-time and part-time attorneys. In 2007, the County Executive proposed, and the Legislature endorsed, a long term plan to create a full-time law office. The first step in this plan was undertaken late in 2007 when the office transitioned three part-time Family Court attorneys to full-time. This change allows even greater access to attorneys by clients, judges and other court personnel.

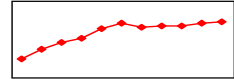
The 2008 Budget transitioned three additional attorneys from their part-time status to full-time. Those attorneys were each assigned to one of three sitting County Court judges. The result was more efficient representation of the Office's Albany County Court clients.

Improvements already evident in the quality of services provided by the Public and Alternate Public Defenders were particularly important in 2008 as they were the basis of the argument for the State to continue providing Albany County with more \$1 million in Indigent Legal Services Funds despite a reduction in total spending, including payments to private counsel under Article 18-B, section 722-b of New York County Law.

## DEPARTMENT HIGHLIGHTS

- The 2009 Executive Budget continues the highly successful transition of part-time attorneys to full-time in the Office by converting seven positions to full-time for a total conversion of 18 attorney positions or more than 50% of its attorney staff. At the conclusion of 2009, nine full-time positions will remain to be converted in 2010.
- The Department's budget includes a total increase of \$317,508 in appropriations related to converting part-time staff to full-time or an increase of 9.9% over 2008. The budget also includes a year to year decrease in expected revenues of \$49,207 related to a decrease in state funding for indigent defense services in the County.
- Also, included in the Department's budget are \$26,184 in contractual expenses for its share of electrical, natural gas, and debt service payments related to its allocated space in the Mercantile Building.

## APPROPRIATION HISTORY

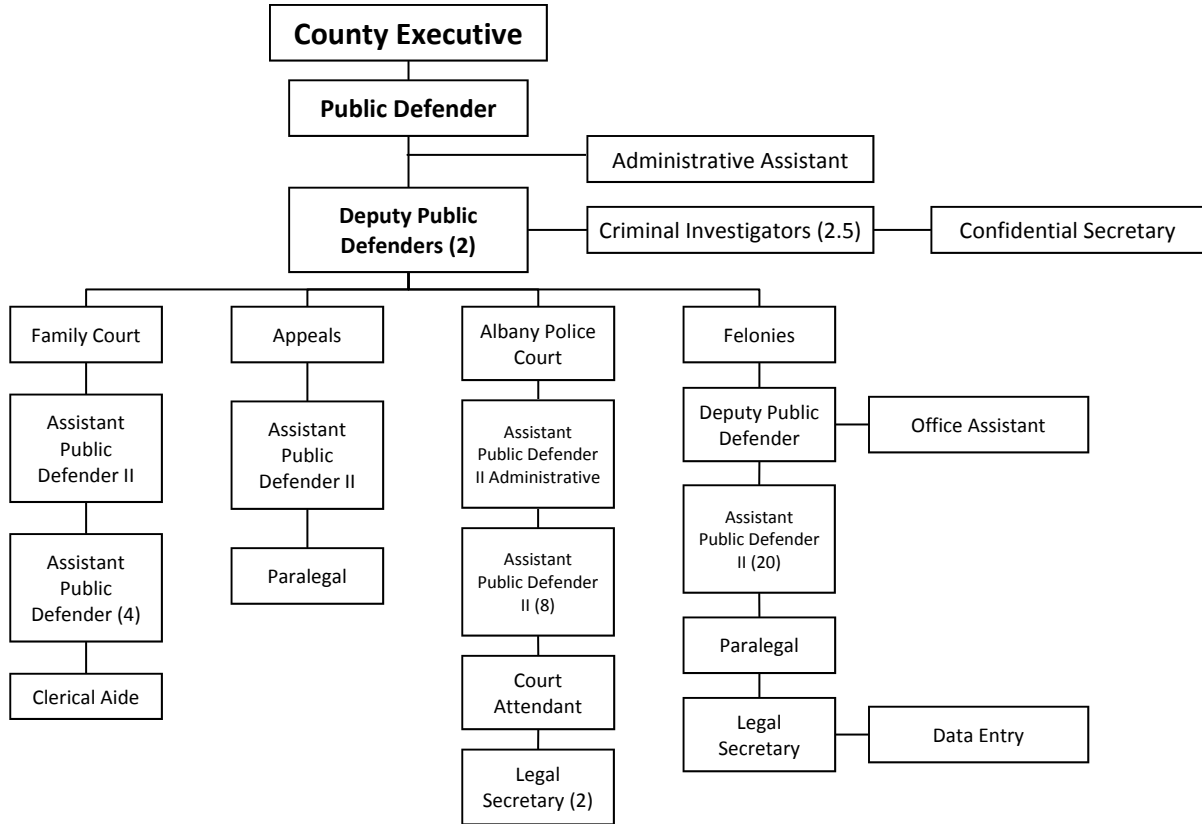


1998:	\$1,783,520
1999:	\$2,174,864
2000:	\$2,404,133
2001:	\$2,590,080
2002:	\$2,921,329
2003:	\$3,128,383
2004:	\$2,987,284
2005:	\$3,017,648
2006:	\$3,059,196
2007:	\$3,141,077
2008:	\$3,201,034

## CONTACT INFORMATION

Office of the  
Public Defender  
County of Albany  
60 South Pearl Street  
Albany, New York 12207  
Office: (518) 447-7150  
Fax: (518) 447-5533

# PUBLIC DEFENDER - 1170



Account	Description	2007 Expended	2008 Adjusted	2009 Proposed	2008-09 Change	2008-09 Percent Change
<b>Appropriations</b>						
<b>Public Defender-(1170)</b>						
	Personnel Services	\$ 1,966,783	\$ 2,226,143	\$ 2,463,634	\$ 237,491	10.7%
	Equipment	\$ 235	\$ 0	\$ 0	\$ 0	0.0%
	Contractual Expenses	\$ 318,856	\$ 233,573	\$ 257,081	\$ 23,508	10.1%
	Fringe Benefits	\$ 729,900	\$ 741,318	\$ 797,827	\$ 56,509	7.6%
	<b>Public Defender</b>	<b>\$ 3,015,774</b>	<b>\$ 3,201,034</b>	<b>\$ 3,518,542</b>	<b>\$ 317,508</b>	<b>9.9%</b>
	<b>Appropriations</b>	<b>\$ 3,015,774</b>	<b>\$ 3,201,034</b>	<b>\$ 3,518,542</b>	<b>\$ 317,508</b>	<b>9.9%</b>
<b>Revenue</b>						
	Public Defender	\$(742,696)	\$(722,708)	\$(673,501)	\$ 49,207	(6.8%)
	<b>Revenue</b>	<b>\$(742,696)</b>	<b>\$(722,708)</b>	<b>\$(673,501)</b>	<b>\$ 49,207</b>	<b>(6.8%)</b>
	<b>County Share</b>	<b>\$ 2,273,078</b>	<b>\$ 2,478,326</b>	<b>\$ 2,845,041</b>	<b>\$ 366,715</b>	<b>14.8%</b>
			<b>2008</b>	<b>2009</b>	<b>2009</b>	<b>2008-09</b>
			<b>Adjusted</b>	<b>Requested</b>	<b>Proposed</b>	<b>Changes</b>
	<b>PUBLIC DEFENDER</b>		49	49	49	0
						<b>Percent Change</b>
						0.0%